

## TRI-BUILT® LOCKIN' POCKET® INTERLOCKING FLASHING SYSTEM

### DESCRIPTION

TRI-BUILT® Lockin' Pocket® Inter-Locking Flashing System is a pre-fabricated inter-locking pocket that is easily assembled on-site and filled with fast setting, solvent free, TRI-BUILT® Hurricane Force® Universal Sealer that becomes waterproof within minutes of application.

The TRI-BUILT® Lockin' Pocket® is available in different packaging options. The pre-fabricated pockets simply connect with tongue and groove joints and are composed of a high strength, flexible polyurethane elastomer. All pieces are easily joined by a patent pending locking system to create a pocket of desired size.

### BASIC USE

TRI-BUILT® Lockin' Pocket® is designed to seal technically challenging roof penetrations where field flashing may not be practical.

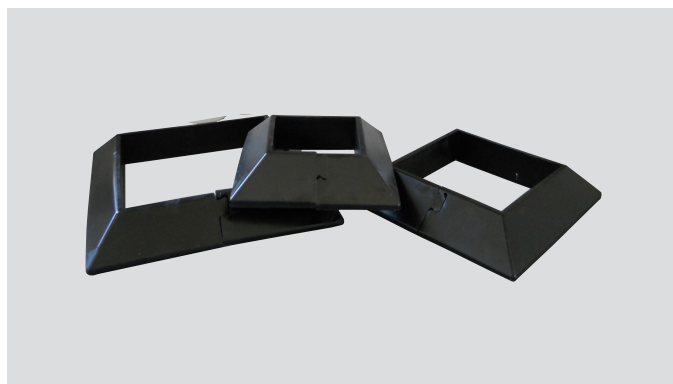
When installed and filled with TRI-BUILT® Hurricane Force® Universal Sealer, the TRI-BUILT® Lockin' Pocket® Inter-Locking Flashing System becomes a long lasting, waterproof, solid mass that can make the most challenging penetrations watertight in minutes.

### APPROVED MEMBRANE SUBSTRATES

- Granule surfaced modified bitumen
- EPDM
- TPO
- Metal
- Smooth surfaced asphalt Built-up Roofs (BUR)
- Gravel surfaced BUR (asphalt & coal tar pitch)

### STORAGE

Keep temperature of contents between 65°F-85°F (18°C-29°C) 24 hours prior to use. Do not store in direct sunlight or temperatures higher than 90°F (32°C).



### FEATURES

Ready to use

No temperature restrictions

Weather resistant

Solvent free

Elastomeric

Compatible with most substrates

Variety of sizes available

### BENEFITS

Requires no mixing, reduces labor costs

Suitable for all climates

Long lasting weather-tight seal

VOC free, no odors

Remains flexible, absorbs stresses

Can be used on SBS, EPDM, TPO, BUR, & Metal

Ability to flash most rooftop penetrations

### SAFETY

Prior to working with this or any product consult product label and Safety Data Sheet (SDS) for necessary health and safety precautions.

### LIMITATIONS

- Do not apply to wet or damp surfaces.
- Do not use grout or any other type of fillers.
- TRI-BUILT® Lockin' Pocket® must be on a flat, level substrate, and is not intended for steep slope applications.

### COLOR

Black

## APPLICATION

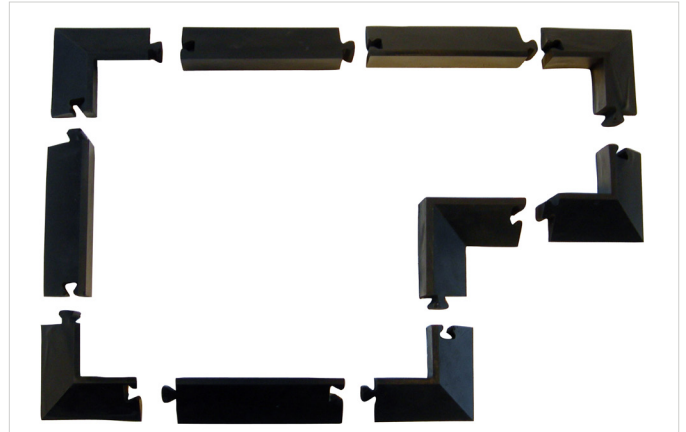
1. Make sure substrate is clear of loose gravel, dirt, granules, or all foreign substances that can affect adhesion. Refer to Surface Preparation Guidelines.
2. Place TRI-BUILT® Lockin' Pocket® in desired location and mark the outside edge for reference. TRI-BUILT® Lockin' Pocket® should be placed to assure at least one (1) inch clearance from the inside of the TRI-BUILT® Lockin' Pocket® and penetration.
3. Penetrations should be prepared by wire brushing to remove loose cements, sealers, rust, or other contaminants that would prevent a positive seal.
4. Seal base of penetration with TRI-BUILT® Lockin' Pocket® Sealant to prevent TRI-BUILT® Hurricane Force® Universal Sealer from flowing through openings.
5. Apply a liberal bead of TRI-BUILT® Lockin' Pocket Sealant to the substrate where TRI-BUILT® Lockin' Pocket® will be placed.
6. Apply a liberal bead of TRI-BUILT® Lockin' Pocket® Sealant to the locking joint of the TRI-BUILT® Lockin' Pocket®.
7. Set TRI-BUILT® Lockin' Pocket® in place and apply equal pressure to assure positive contact with the roof surface.
8. Strike away excess sealant.
9. Dispense an initial amount of TRI-BUILT® Hurricane Force® Universal Sealer to ensure a proper mix. Refer to TRI-BUILT® Hurricane Force® Universal Sealer Specification Data Sheet for additional guidelines.
10. Fill assembled pocket with TRI-BUILT® Hurricane Force® Universal Sealer until full.
11. Option for a white Lockin' Pocket®: Coat the entire Lockin' Pocket® system with any Roof X Tender™ white coating. ALLOW THE SYSTEM TO CURE FOR A MINIMUM OF 4 DAYS PRIOR TO COATING.

## SURFACE PREPARATION

All work surfaces should be clean, dry, and free of dirt, dust, debris, oils, loose and/or embedded gravel, un-adhered coatings, deteriorated membrane and other contaminants that may result in a surface that is not sound or is uneven. For applications on granule surfaced modified bitumen membranes, remove all loose granules from the surface of the membrane prior to installing TRI-BUILT® Lockin' Pocket® Sealant.

When the TRI-BUILT® Lockin' Pocket® is installed on a single ply membrane the surface of the membrane must be prepared according to the single ply manufacturer's recommendations. As a general guideline the following methods of surface preparation shall apply:

- EPDM: Clean with splice wash or surface cleaner and prime.
- TPO: Clean with surface cleaner and prime.
- Gravel BUR's: Remove gravel surfacing down to plies.



## PACKAGING AND COVERAGE

The TRI-BUILT® Lockin' Pocket® Inter-Locking Flashing System is available in the following packages:

### Description

4" Kit

6" Kit

8" Kit

LPS Sealant 10.1 Oz Tube

The 4", 6", 8" includes 2 cartridges of TRI-BUILT® Lockin' Pocket® Sealant.

When used as a pocket sealer, one cartridge of TRI-BUILT® Hurricane Force® Universal Sealer will yield approximately 90 cubic inches of filler.

TRI-BUILT® Hurricane Force® Universal Sealer and TRI-BUILT® 1-Part Pumpable Sealant sold separately.

For applications over existing weathered asphalt or coal tar pitch BUR, apply TRI-BUILT® Universal Primer prior to the application of TRI-BUILT® Lockin' Pocket®. For applications over fresh and/or non-oxidized asphalt, coal tar or plastic film membranes, apply TRI-BUILT® Surface Treatment prior to the application TRI-BUILT® Lockin' Pocket®.